



promuje
łódzkie



Marshal's Office of the Lodzkie Region
Department of Entrepreneurship

Programme documents



Funding



The main economic initiatives

European Economic Forum



International Congress of Bioeconomy



Investor and Exporter Service Centre



Companies of the Lodzkie Region



Representative Office of the Lodzkie Region and the City of Lodz in Chengdu



Regional Office of Lodzkie in Brussels



Lodz Knowledge Transfer Platform

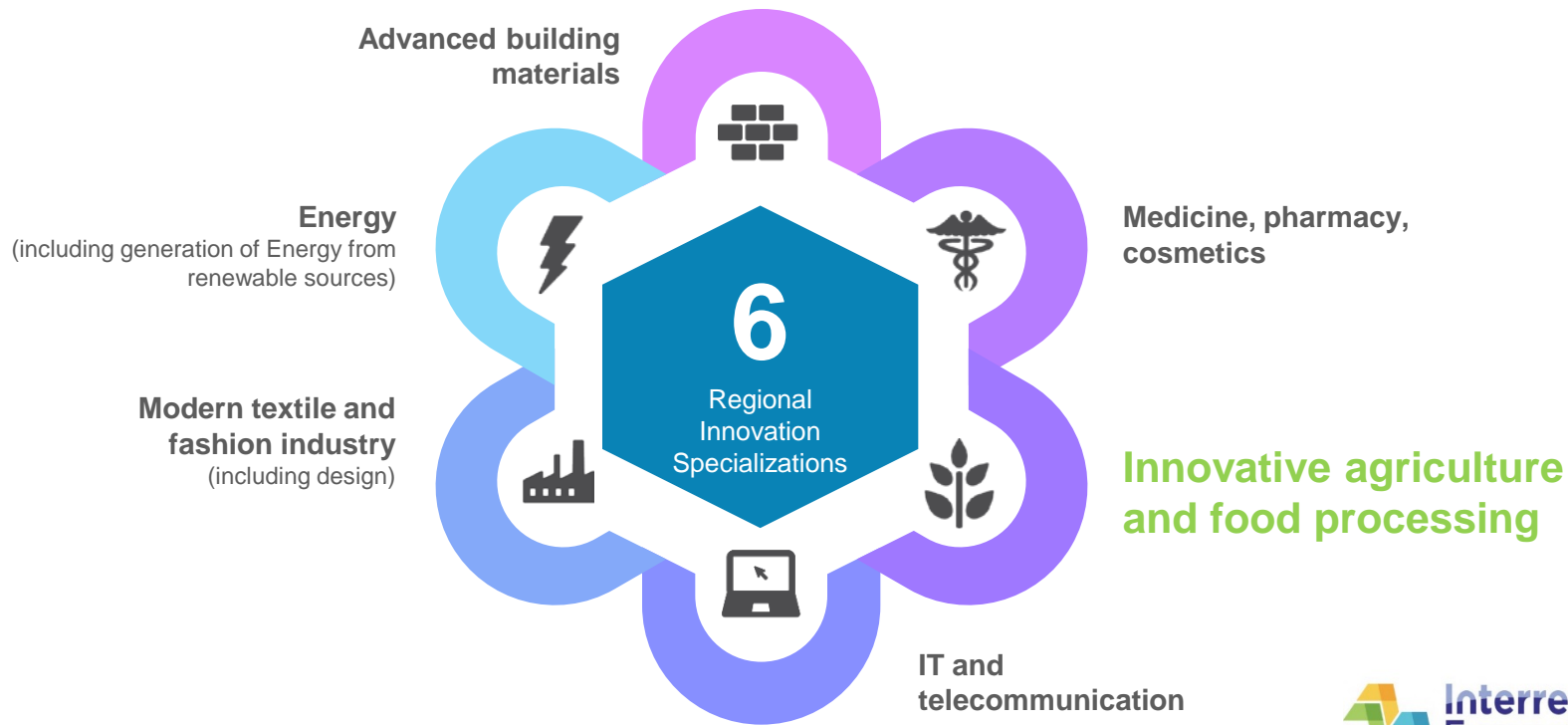


Innovation and invention fairs



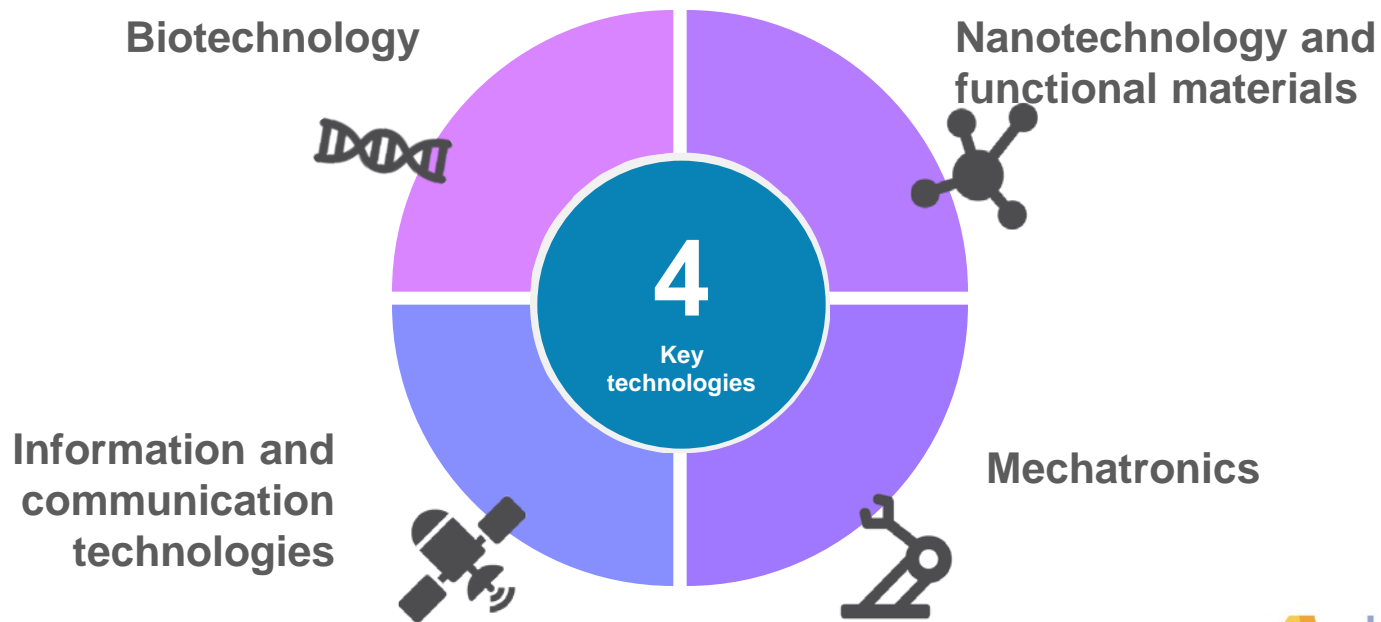
Regional Innovation Strategy LORIS 2030

for the Lodzkie Region



Regional Innovation Strategy LORIS 2030

for the Lodzkie Region



Vision and mission of RIS

Agriculture and food processing of Lodzkie Region reached the position of a major supplier of the highest quality food in Europe and the world.

Our innovation, specialization, cooperation and activity in new markets, create development trends and a strong industry brand.

Stakeholders



Lodz Agricultural Advisory Centre in Bratoszewice



Research Institute of Horticulture in Skierniewice



Lodz University of Technology



Department of Agriculture and Environment Protection

Need for improvement in the following areas:

1. access to market knowledge
2. innovation and business environment,
3. economic environment (in order to adapt to the needs of potential investors),
4. increase in foreign trade in the SME sector,
5. implementing innovative investments by SMEs
6. create a demand on the local market for innovative products,
7. improvement of the competitiveness and development of enterprises
8. implementation of innovative products and production processes.

The support is targeted on investments related to the expansion of SMEs, changes in the manufacturing process, change in service provision, or organizational changes.

promuje
łódzkie

**Marshal's Office of the Lodzkie
Region**

**Department of the
Entrepreneurship**

**Tuwima 22/26 Street
90 - 102 Lodz
phone /+48/ 42 291 98 40
przedsiębiorczosc@lodzkie.pl**